

Signature[®] | CARPET

Firenze



The Firenze Collection combines a range of bold designs with a palette of modern colours to create a truly unique collection. It is the newest creation from Ireland's premier carpet distributor, Signature Floors.

Signature Floors have been a market-leading supplier to the Irish flooring trade for decades. Stocking product ranges in laminate, LVT/SPC, artificial grass, cushion vinyl and carpet, Signature Floors are sure to have a flooring solution that is perfect for you. Selecting flooring with the Signature mark ensures you are buying quality and style at a competitive price.

www.signaturefloors.ie



SignatureTM

The Mark of Quality

4.85 METRE WIDTH

COMFORT BACKING

HEAVY DOMESTIC USE

STAIN RESISTANT





CHEVRON

This collection features a regular, two-tone chevron pattern that creates sharp lines and a sense of movement on the floor.



Midnight Gold



Regal Red



Toasted Almond



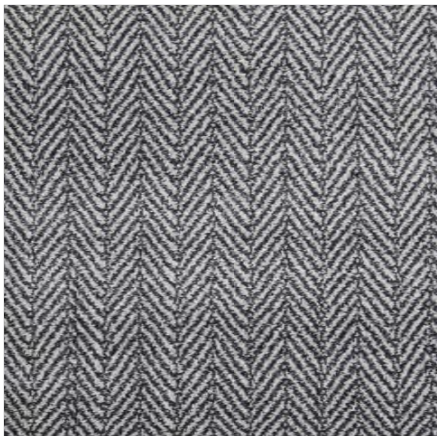
Barley



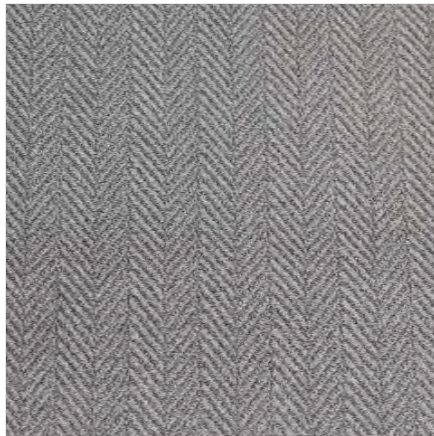
Denim



Nickel



Sandstone



Space



Winter Sky





BRUSHSTROKES

The Brushstrokes range features two distinct designs. The first is the dramatic artists' palettes of Blonde Haze, Mineral and Monochrome. The second is the striking dappled effect of Burnt Umber, Marble and Titanium.



Blonde Haze



Mineral



Monochrome



Burnt Umber



Marble

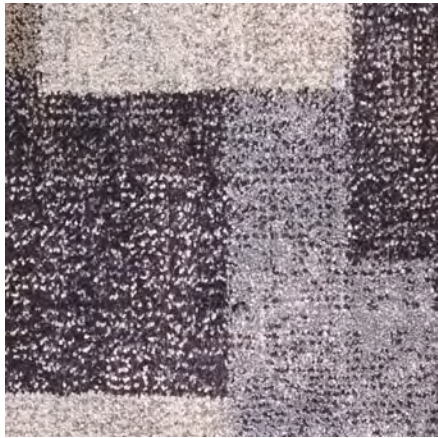


Titanium

PATCHWORK

This collection combines irregular shapes, straight lines, and modern colour combinations to put a new twist on the timeless patchwork concept and create a truly unique-feeling design.





Atlantic Blue



Bronze Slate



Clover



Dusty Blue



Ivory Tusk



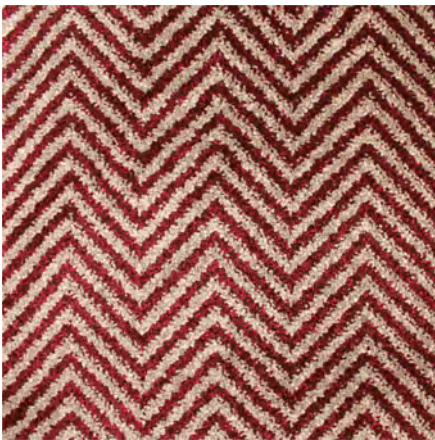
Seaspray





WEAVE

The Weave range features a regular, continuous pattern that uses two contrasting colours to create a sense of flow along the length of the carpet.



Cardinal Gold



Platinum



Rose Gold



Smoke Steel



Aspen



Cappuccino





FERN

This collection reimagines the shape and form of an unfurling fern. Using a contrasting palette, the design of the delicate abstract fern stands out against a rich background of blocked colour.



Taupe



Quicksilver



Crimson



Silver Birch



Mink Grey



Sapphire

GRIDS

The Grids range uses irregular, often intersecting, straight lines to form a non-symmetric pattern that creates a striking effect along upon the floor.





Copper Grey



Cosmic Blue



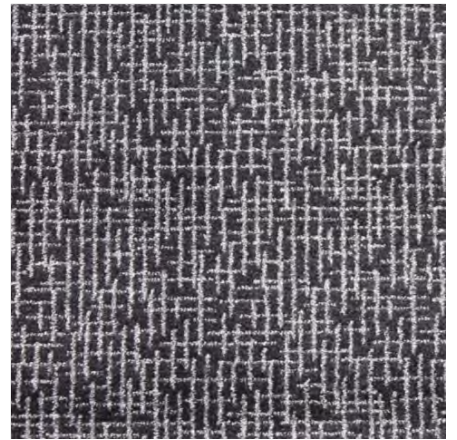
Pebble



Caramel



Cinder Grey



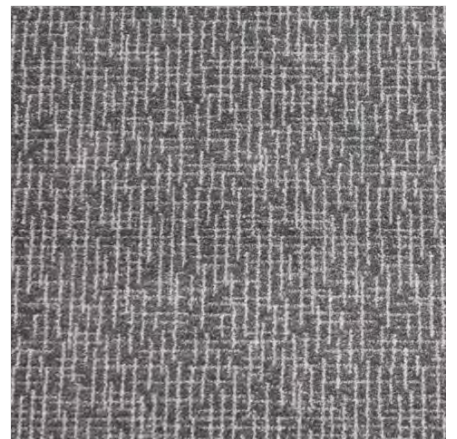
Cobalt Blue



Cream Sage



Red Pepper



Onyx



Rosebud



Danube



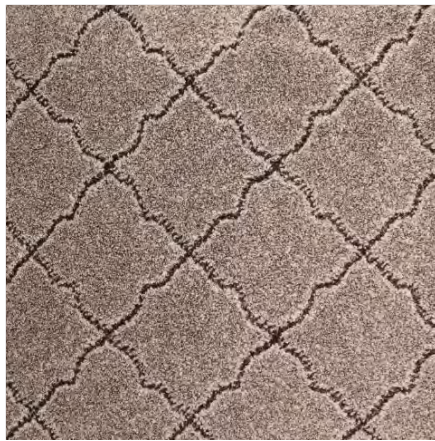


MARRAKESH

This collection is heavily influenced by the textiles and architecture of Northern Africa. A historical, geometric Moorish design is fused with a modern colour palette to create a carpet that feels traditional yet contemporary.



Azure



Cool Grey



Candy Cane



Ruby



Storm Grey



Wedgewood





MOSAIC

The Mosaic range fuses together two contrasting square designs that, when combined, create a striking, large symmetric pattern across the floor.



Tempest



Portland



Redwood



Shadow



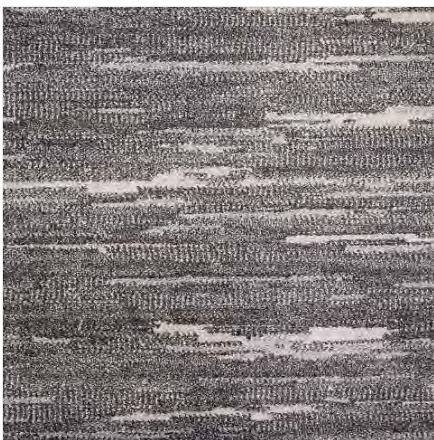
Midnight Blue





WAVE

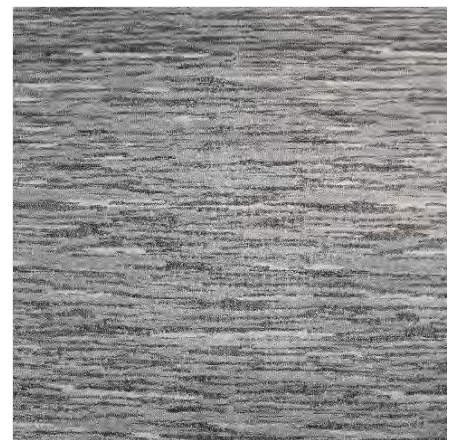
This collection pays homage to the ripples and flow of the ocean, recreating the lapping of waves by using contrasting colours to create movement across a stunning modern carpet.



Graphite



Aquatint



Steel

Firenze

The Firenze collection is a contemporary range of eye-catching designs and colours to transform and enhance any interior. There are nine designs in the range, boasting striking patterns and bold designs in modern blues, greys and neutral colourways. The scale of the bold designs is tempered by the use of texture which accentuates the softness and practicality of the woven Wilton frieze pile. Firenze's low tog rating of 1.33 means it is suitable to fit over most underfloor heating systems.

- 100% stain-resistant frieze yarn
- Woven backing
- Bleach cleanable
- Suitable for heavy domestic and light commercial use

| | |
|------------------------|--|
| Construction | Woven Wilton |
| Type of Manufacture | Woven |
| Width | Ca. 400cm |
| Backing | Woven |
| Pile fibre composition | 100% Stain Resistant P/P Frieze |
| Pile height | 10mm |
| Total weight | Ca. 2780 g/m ² |
| Pile weight | Ca. 1850 g/m ² |
| Pattern Repeat | Grids: 20cm x 20cm Wave: 100cm x 106cm Chevron: 99.6cm x 99.2cm Mosaic: 20.12cm x 20cm Marrakesh: 12.5cm x 12.4cm Weave, Fern & Patchwork: 100cm x 100cm Brushstrokes (Blonde Haze, Monochrome & Mineral): 100cm x 100cm Brushstrokes (Burnt Umber, Marble, Titanium): 80cm x 80cm |
| Use classification | Extra heavy domestic / Light contract |
| TOG rating | 1.33 Tog |
| Water Resistance | 4 – 5 |
| Light fastness | 5 - 6 |

This technical datasheet was developed by Signature Floors

At the time of publication, all the information within this datasheet is correctly stated. Signature Floors reserves the right to update or amend the specifications of this product at any time without prior notice to third parties.

Carpet Underlays:

Each underlay has unique performance characteristics. We have included a use recommendation table for you to be able to easily compare the underlays. Please note that generally the thicker the underlay, the better the underfoot comfort, whilst the greater the density the better the underlay will perform over time.

| Name | Thickness | Roll Weight | Impact Sound dB |
|-------------------|-----------|-------------|-----------------|
| Supreme | 11mm | 24kg | LW 43 |
| Verve | 9mm | 19.kg | LW 40 |
| Maxi | 11mm | 21kg | LW 45 |
| Pinnacle | 9.75mm | 40.5kg | LW 42 |
| Panache | 10mm | 15.8kg | LW 39 |
| Thermaflow Impact | 6.75mm | 39kg | LW 31 |
| Durafit 650 | 6.5mm | 40.08kg | LW 28 |

Thermaflow Impact is especially designed for use with most types of underfloor heating and is suitable for heavy commercial use.

Durafit 650 is the world's leading double-stick underlay. It is a trusted system for heavy-wear contract installations, giving increased carpet life, improved appearance retention, and greater dimensional stability.



Care & Maintenance

The key to maintaining a carpet and keeping it in good condition is to prevent particles, dirt, and dust from being worked into the carpet pile. Doing so will ensure that there are no abrasive particles rubbing against the fibres or discolouring the carpet. There are a few recommendations we would make to help you try and reduce the likelihood of this:

- Vacuum the carpet regularly. We would recommend at least twice a week to make sure the carpet is kept clean and free of unwanted objects. Ideally, our carpets should be vacuumed with a cleaner including a beater bar and brush attachment.
- Removing shoes at the entrances to your home will also help reduce the amount of dirt and objects from the soles of your shoes making their way into your carpet.
- Install large, strong doormats at the entrances to your home. This will help prevent dirt from outside being brought into the house and working its way into your carpet.
- Where doormats or removing shoes are not possible, we would advise against installing light shades of carpet near entrances in the home, as they will be subject to immediate dirt and water brought straight into the house.



In a modern home that may include children or pets, spillages and stains can be a common occurrence. Handled correctly these stains need not be a big issue and can be simple to fix if you follow our guidelines below:

- The most important thing to remember is to try and clean spillages or stains the moment they occur. The longer you leave treating stains, the harder they will be to completely remove.
- To remove a spillage, blot the liquid with dry kitchen towel or a clean, dry cloth. Start from the outside edges of the spillage and work inwards, this will help stop the stain from spreading. Continue until you have soaked up all the excess liquid.
- To clean minor stains, blot the area with a clean, damp cloth that has been soaked in warm water. It is important to be patient with the blotting process – do not rub the stain too hard or fast but approach it slowly and methodically.
- To clean major stains, a solution of bleach and warm water can be used. The dilution of the bleach solution is very important and must be 1:7 - one part bleach to seven parts water. Use this solution sparingly and do not over-soak the carpet. You can repeat this process if required.
- For any stains that cannot be treated this way, we would advise contacting a professional carpet cleaner to assess the issue.



Also available from Signature Floors



Signature | VINYL



Signature | GRASS





Signature® | LAMINATE



Signature® | CARPET TILES



Signature® | LVT

Signature[®] | CARPET



www.signaturefloors.ie

2022/23